

The Planning Application Process

The NSW Government has committed \$750 million to the redevelopment of Royal Prince Alfred (RPA) Hospital to deliver a new hospital building and refurbishment of existing spaces.

This is the most significant investment in RPA's 140-year history to support the world-leading services provided at RPA for the 740,000 people who live in Sydney Local Health District and the more than 1 million people who come into the District each day to work, study and visit.

When complete, the RPA Redevelopment will deliver:

- Expanded and enhanced Emergency Department and Intensive Care Units
- State-of-the-art operating theatres
- Expanded and improved adult inpatient accommodation
- Increased interventional and imaging services
- Expanded neonatology services
- Facilities and capabilities for integrated research, education and training
- Improved public domain and services including roads, wayfinding, landscaping and information and communications technology infrastructure.

Planning approval pathway for RPA Hospital Redevelopment

The State Significant Development Application (SSDA) process is the formal planning approval pathway for major infrastructure developments valued at \$30 million and above. The project will be assessed and approved via the Department of Planning and Environment (DPE).

How is the State Significant Development Application (SSDA) assessed?

The SSDA requires the development of a comprehensive Environmental Impact Statement to detail the project activities, any potential environmental impacts, and proposed mitigation measures to manage these impacts.

The Department of Planning and Environment will assess the planning application and the Environmental Impact Statement. A recommendation will then be made to the Minister for Planning (or delegate), who can approve the application.

What is an Environmental Impact Statement?

The Environmental Impact Statement is a comprehensive technical document that provides information on the development of the RPA Hospital Redevelopment and potential environmental impacts. It outlines how these impacts can be appropriately mitigated.

The matters that must be assessed in the Environmental Impact Statement are determined by the Department of Planning and Environment, in consultation with local stakeholders, such as the City of Sydney and other government agencies including Transport for NSW.

The matters are called the **Secretary's Environmental Assessment Requirements (SEARs)** which can be found on the Department's website. The Environmental Impact Statement is used to inform the development approval decisions.

State Significant Development Application process



Scoping

Scoping Report
Secretary's
Environmental
Assessment
Requirements



EIS Preparation

Environmental
Impact
Statement



Public Exhibition

An opportunity
for the
community
to make a
submission



Respond to Submission

Respond to
the feedback
received



Assessment

Report
produced that
recommends
conditions of
consent



Determination

Determination
of application



Post Approval

Assessment
of post
approval
matters

What does the Environmental Impact Statement include?

The Environmental Impact Statement for the RPA Redevelopment will include detailed information to address the Secretary's Environmental Assessment Requirements. These cover the following areas and consider impacts during construction through to operation of a new health facility:

- Aboriginal cultural heritage assessment
- Arboriculture and biodiversity assessment
- Architectural and landscape design
- Connecting with Country
- Bushfire assessment report
- Civil design and structure
- Services
- Community engagement strategy
- Preliminary construction management plan
- Construction and operational waste management plan
- Contamination and potential hazards analysis
- Environmental wind assessment
- Geotechnical assessment
- Heritage impact statement
- Noise and vibration
- Policies and strategic context
- Social impact assessment
- Visual impact assessment
- Transport and accessibility.

Public exhibition period

The Department of Planning and Environment publicly exhibits the State Significant Development Application and Environmental Impact Statement for a period of 28 days minimum. The public exhibition process provides an opportunity to review detailed documentation on the planning for RPA Hospital Redevelopment and have your say through formal submissions process.

If you would like to lodge feedback on the application for RPA Hospital Redevelopment, please follow the formal process managed by Department of Planning and Environment as outlined on their website.

pp.planningportal.nsw.gov.au/major-projects/projects/royal-prince-alfred-hospital-redevelopment.

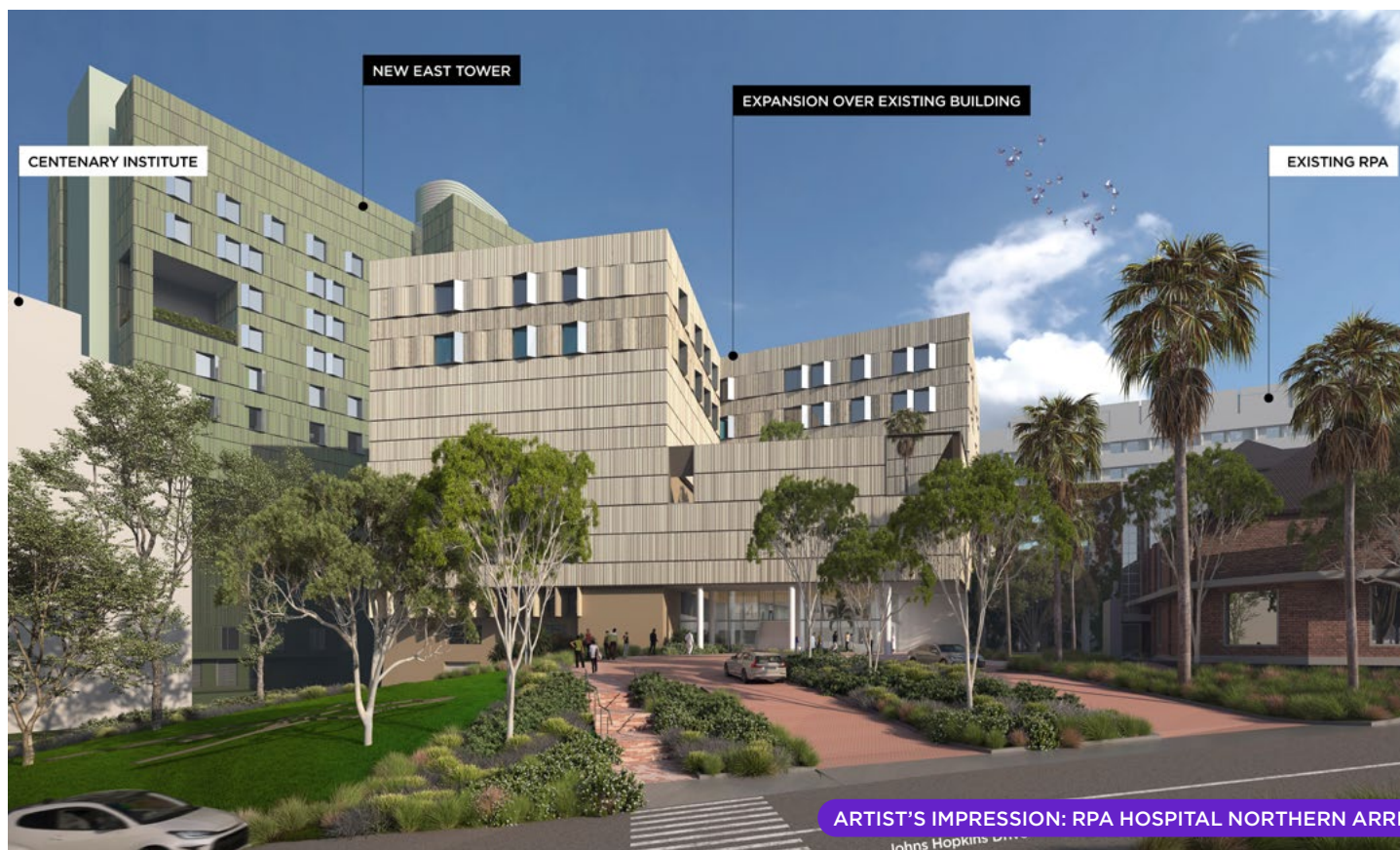
Can I provide general feedback rather than making a formal submission?

There are various ways in which you can have your say on the RPA Redevelopment. You are invited to send any feedback, suggestions or comments you would like to raise with the redevelopment team at any time via the details at the bottom of the page.

To sign up to our newsletter and/or find out more about the project, visit our website at www.rparedevelopment.health.nsw.gov.au

Where can I view the Environmental Impact Statement?

Following submission of the State Significant Development Application in early 2023, the Environmental Impact Statement will be available to view electronically on the Department of Planning and Environment's major projects website at pp.planningportal.nsw.gov.au/major-projects/projects/royal-prince-alfred-hospital-redevelopment.



Next steps

Following completion of the public exhibition period:

- Health Infrastructure will review all the community and government agency submissions received by the Department of Planning and Environment and will produce a Response to Submissions Report. This report is provided back to the Department of Planning and Environment and will be considered as part of the overall review of the applications.
- The Department of Planning and Environment will assess the State Significant Development Application and consider all community and government agency submissions.
- The Department of Planning and Environment will make a recommendation to the Minister for Planning after reviewing the application, community and government agency submissions and the Response to Submissions Report.
- The Minister for Planning (or delegate) will then determine the application, including applying consent conditions that must be adhered to for the detailed design, construction and commissioning of the new facility.
- Main construction works contract is expected to be awarded in late 2023 once planning approvals are in place and consent conditions satisfied.

Please see our [Planning exhibition fact Sheet](#)

Please see our [Planning FAQs](#)

Key Milestones



How can I contact the project team?

If you have any questions or would like more information please contact our project team at the details below.

Email: rparedevelopment@health.nsw.gov.au | **Website:** www.rparedevelopment.health.nsw.gov.au