

## Schematic Design

### History in the making

Since its foundation in 1882, RPA Hospital has been a respected provider of healthcare and a worldwide leader in innovation and healthcare excellence, maintaining the philosophy that *our doors are always open to those who need our help*.

The cornerstone of the Sydney Local Health District, the NSW Government's \$750 million investment into the redevelopment of RPA Hospital will see the biggest transformation of RPA in its 140-year history of caring for our community.

The RPA Redevelopment will deliver an enhanced and expanded Emergency Department and Intensive Care Unit, as well as world-class medical imaging suites, operating theatres and maternity, birthing and neonatal areas and additional adult and paediatric inpatient beds.

### Key Milestones



### What services will the development deliver?



Expanded and enhanced Emergency Department and Intensive Care Units



Expanded women's ambulatory and neonatology services



State-of-the-art operating theatres and interventional cardiology



Facilities and capabilities for integrated research, education and training



Expanded and improved adult inpatient accommodation



Additional adult and paediatric inpatient beds



Increased interventional and imaging services



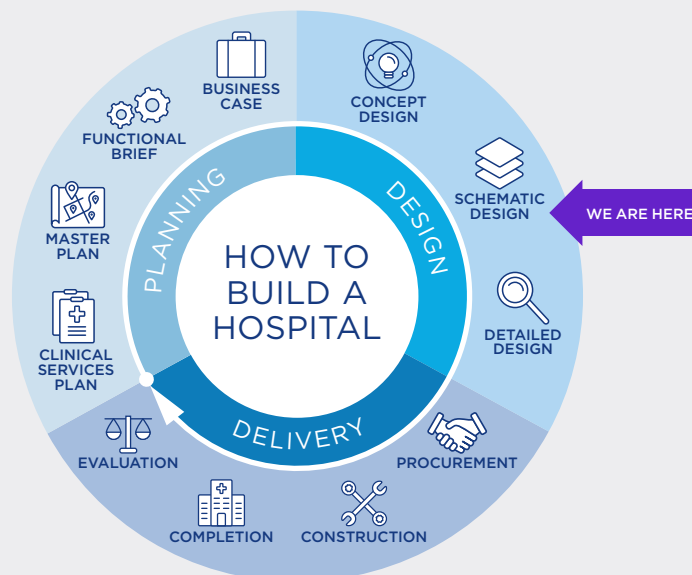
Improved public domain and services including roads, wayfinding, landscaping and information and communications technology infrastructure.

## Schematic Design for RPA Redevelopment has begun

An important milestone has been reached with work on schematic designs for the redevelopment of RPA Hospital beginning.

Following the successful public unveiling and exhibition of the concept designs in September 2022, the focus for planning has turned to developing the schematic designs for the new hospital.

The design process for the RPA redevelopment is broken up into three stages; concept design, schematic design and detailed design. Schematic design is set to be complete by early 2023.



## Consultation is key

Creating a state-of-the-art, custom-built hospital requires the expertise and collaboration of architects and engineers, as well as the clinicians, service operators and management team who will work and operate in the new spaces.

Throughout the schematic design process Health Infrastructure works with Project User Groups (PUGs), also referred to as Schematic Design User Groups (SDUGs), to ensure that the newly built hospital will operate efficiently and provide high quality care.

## Who are the SDUGs and what do they do?

SDUGs are 'department focused' and represent the hospital's operations team, patients, and staff. User group members provide important insights that inform the design process based on their operational, clinical and personal experience. Working alongside the architectural team, the SDUGs assist with configuring the lay-out of each department within the new hospital and design how rooms and services will relate to each other.

During the schematic design process user group are focusing on:

- entry and navigation of departments
- mapping and defining the location and service of each room
- creating spaces that allow neighbouring rooms to work in with each other and cooperate
- door locations
- departmental corridors
- security zones
- patient, staff, and public flows.

The final schematic designs for the redevelopment of the RPA hospital will be heavily informed by the feedback from schematic design PUGs. This will ensure the services and facilities of the new state-of-the-art hospital are fit-for-purpose and follow best practice.

For more information, please see our [fact sheet on Schematic Design](#).

## Connecting with Country

The Royal Prince Alfred Hospital Redevelopment is committed to helping support the health and wellbeing of Country by valuing, respecting, and being guided by Aboriginal people, who know that if we care for Country – it will care for us.

In partnership with Balarinji, an Indigenous design and strategy organisation, RPA has been developing the Connecting with Country framework for the RPA Redevelopment. A continuous commitment and process, the framework is developed through ongoing and extensive consultation with local Aboriginal groups.

Thirteen design themes have been identified in the framework for integration in the RPA Redevelopment, these include:

- Acknowledging a Proud History
- Language Integration
- A Travelling Place
- Storytelling and Indigenous Cultural Intellectual Property
- Country, Wellbeing and Health
- The Physical Activating the Spiritual
- Respecting Cultural Protocols
- Building Trust with Community
- Caring for Country
- Ongoing Engagement
- Social and Cultural Inclusivity
- Ongoing Partnerships

The Connecting with Country framework will be used to support the integrating of the design themes and ensure opportunities for co-design and further engagement continue through the life of the project.

For further information on Connecting with Country please see the [Connecting with Country fact sheet](#).

## Listening to our community

Since the beginning of March 2020, the RPA Redevelopment has actively engaged with our community and local stakeholders to ensure we are building a hospital that meets healthcare needs of the district and is design to make everyone feel safe, welcome, and comfortable.

Engagement launched with a survey between March and April 2022 that captured early feedback from staff and community on what they wanted for the redevelopment and built awareness of the project. Responses from the survey were overwhelmingly positive and provided critical insights that have informed the design process since.

In September 2022 we unveiled the Concept Design, with the project team delivering a number of online and in-person consultation sessions with community, staff and consumers to capture important feedback on the concept design and inform next steps.

In late September 2022 information was shared with staff, community and neighbours detailing the temporary relocation of the RPA helicopter landing site. This consultation was targeted and provided information around the plans for the relocation, its impacts and fostered an important ongoing conversation with those impacted or involved with the relocation.

In November, Indigenous construction company Barpa Pty Ltd was awarded an enabling works contract in a significant milestone for the redevelopment of the Royal Prince Alfred (RPA) Hospital.

Following the announcement, Uncle Brendan Kerin from the NSW Metropolitan Local Aboriginal Land Council led a traditional smoking ceremony which prepares the land as a safe and welcoming place for all those who are working on it. RPA Hospital has a long history of working in partnership with our community. The project will continue

to engage with and seek consultation with staff, clinicians and consumers to understand the needs of our services and departments and ensure the hospital is purpose built to meet the growing healthcare needs of everyone who connects with RPA.

For more information on our engagement to date and the feedback we have received, please read the Outcomes Reports:

- [Engagement Launch](#)
- [Concept Design](#)
- [Temporary Helicopter Landing Site](#)
- [Enabling Works](#)

## Where to next?

Health Infrastructure will be lodging a State Significant Development (SSD) application for the \$750 million RPA redevelopment in late 2022.

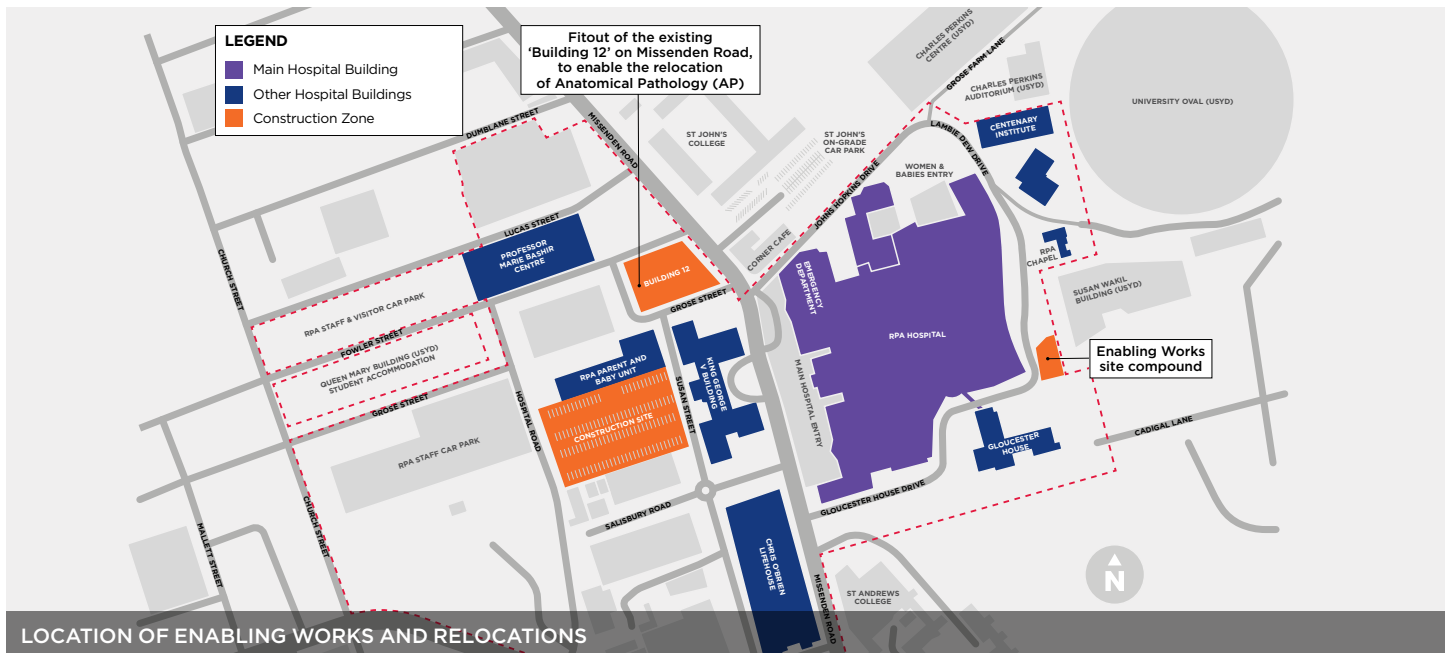
The application will be the result of two years of detailed planning and extensive consultation with clinicians, operational staff, community members and local and state government agencies.

Following lodgment, the SSD application will then be put on public display where the community is encouraged to review the design make submissions with feedback.

## Want to find out more?

You can find out more about the redevelopment at: [www.rparedevelopment.health.nsw.gov.au](http://www.rparedevelopment.health.nsw.gov.au).

You are also invited to send any feedback, suggestions or comments you would like to raise with the redevelopment team via the contact form on our website or by emailing: [rparedevelopment@health.nsw.gov.au](mailto:rparedevelopment@health.nsw.gov.au)



## How can I contact the project team?

If you have any questions or would like more information please contact our project team at the details below.

**Email:** [rparedevelopment@health.nsw.gov.au](mailto:rparedevelopment@health.nsw.gov.au) | **Website:** [www.rparedevelopment.health.nsw.gov.au](http://www.rparedevelopment.health.nsw.gov.au)