

Works notice: Monday 13 November 2023

Sydney University bike rack relocation

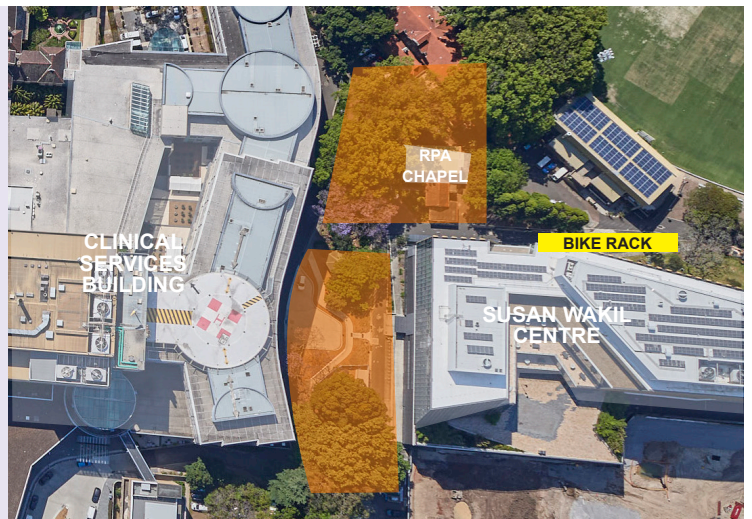
From Monday 13 November 2023 between the hours of 7am and 5pm, works will commence on the relocation of the Sydney University bike racks.

The Sydney University bike rack will be reconfigured to ensure access is maintained during building demolition works on Lambie Dew Drive. Cyclists can still access the bike rack in the same area but will notice a slight change to the location and an increase of construction fencing.

A traffic control plan has been developed and there will be traffic controllers in place to help pedestrians, cyclists and vehicles navigate the space.

Key impacts

- Sydney University bike rack relocated
- Lambie Dew Drive to Susan Wakil Centre access reduced but maintained
- Small crane set up on Lambie Dew Drive
- Building demolition and tree removal works continue
- Increase of construction works and traffic in this area
- Possible noise and dust



Changes to pedestrian access

Major works to prepare the site for the future 15-storey hospital building have begun on Lambie Dew Drive and Johns Hopkins Drive. Changes to pedestrian access between key buildings within the RPA health precinct are required to ensure everyone's safety. Pedestrians are advised that the best access from RPA Hospital through to Sydney University is via the footpath on Johns Hopkins Drive. Learn more in our [pedestrian access changes works notice](#) on our [project website](#).

More information

The health, safety and well-being of staff, patients, neighbours and community is our highest priority. For any queries relating to this work, please contact the RPA Redevelopment Team.

Email HI-RPARedevlopment@health.nsw.gov.au

Phone (02) 9978 5901

We thank you for your patience and cooperation while we complete these necessary works.

The RPA Hospital Redevelopment Team

How can I contact the project team?

If you have any questions or would like more information please contact our project team at the details below.

HI-RPARedevlopment@health.nsw.gov.au | RPAredevlopment.health.nsw.gov.au | (02) 9978 5901