

The NSW Government has committed \$750 million to the redevelopment of Royal Prince Alfred (RPA) Hospital to deliver a new hospital building and refurbishment of existing spaces.

This is the most significant investment in RPA's 140-year history to support the world-leading services provided at RPA for the 740,000 people who live in Sydney Local Health District and the more than 1 million people who come into the District each day to work, study and visit. The project will be delivered by Health Infrastructure in partnership with Sydney Local Health District.

When complete, the RPA Redevelopment will deliver:

- Expanded and enhanced Emergency Department and Intensive Care Units
- State-of-the-art operating theatres
- Expanded and improved adult inpatient accommodation
- Increased interventional and imaging services
- Expanded women's neonatology services
- Facilities and capabilities for integrated research, education and training
- Improved public spaces and services including roads, wayfinding, landscaping and information and communications technology infrastructure.



## RPA's biggest transformation unveiled

The RPA Hospital Redevelopment has reached another milestone with the release of our latest 3D animation.

We're excited to showcase the artist impression of the proposed 15-storey East tower, the centrepiece of the RPA redevelopment, set to come to the Camperdown campus.

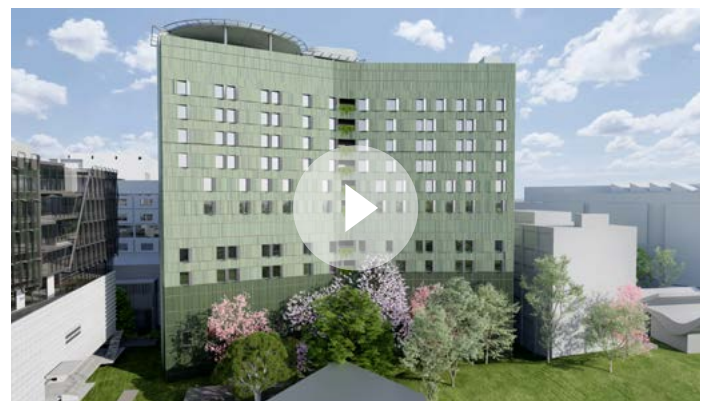
[Click here](#) to take a tour of the future expansion and see how the transformation will continue to upgrade our health services to meet the needs of the growing community.

Patients, carers and visitors are at the centre of the design which includes light-filled spaces, as well as access to a new courtyard garden and patient lounges to provide a supportive environment for treatment and care.

The bright, contemporary design of the new tower seamlessly connects to the existing hospital campus and also includes a new northern entry to hospital from Johns Hopkins Drive, improving access to the hospital.

The major investment will enhance access to vital healthcare and deliver an enhanced and expanded emergency department and Intensive Care Unit, as well as medical imaging, operating theatres, maternity, birthing and neonatal areas, and additional inpatient beds.

We're so excited to bring the future of healthcare to the Royal Prince Alfred Hospital campus and look forward to keeping you in the loop on all things RPA as we progress through the design phase.



## Contractor Awarded to Finalise Plans

In January 2023 CPB Contractors were appointed to finalise plans for the \$750 million RPA Hospital Redevelopment. CPB Contractors have been engaged following a competitive tender process to finalise the design for the redevelopment, continuing to work with RPA clinicians, patients, families and community members.

CPB has developed a strong reputation for its expertise in delivering successful projects including Campbelltown Hospital and Nepean Hospital's Stage 1 Redevelopment and their team are able to draw on this experience in their design and planning role at RPA.

This is another exciting milestone for the RPA team and we look forward to a big 2023 for the RPA Redevelopment.

## Enabling works underway

To prepare for construction of the new facilities, Indigenous construction company Barpa commenced enabling works in late 2022.

An exciting milestone for the project, the beginning of enabling works was celebrated with a traditional smoking ceremony led by Aboriginal Elders and knowledge holders on Gadigal Country.

As we progress through preparing the site for main works to commence, you may notice traffic and vehicle access changes, pedestrians path adjustments, vegetation removal and the relocation of hospital services.

To ensure the safety of all, we will continue to inform staff and community about upcoming impacts and all works will be well signposted with active traffic management. Find out more on the works [notifications page](#) on our [project website](#).



UNCLE BRENDAN, LEADING THE SMOKING CEREMONY



## SSDA Application Submission

Health Infrastructure has lodged the State Significant Development (SSD) application for the \$750 million RPA Redevelopment, marking two years of detailed planning and extensive consultation with clinicians, operational staff, community members and local and state government agencies.

The SSD application is on public display with the NSW Department of Planning and Environment on their major projects website at: [planning.portal.nsw.gov.au/major-projects](http://planning.portal.nsw.gov.au/major-projects). During the public exhibition period the community is encouraged to review the design and make a formal submission.

### State Significant Development Application process



## Community engagement

Talking to the community about what they want, and need is a vital part of our planning and delivery process that complements our consultation with hospital staff, clinicians and consumers.

There are many ways we have ensured the community, staff, clinicians and consumers are informed and have had an opportunity to provide feedback and input into this important project. This includes community information sessions, surveys, online meetings, project displays in the hospital foyer, regular updates on our project websites, letter-box drops to our neighbours, and regular e-newsletters.

We have worked closely with the community, staff, clinicians and consumers to share project information, updates and to ask for feedback. To see what feedback we have received, and the improvements we have made to the designs, please see our **Engagement Outcome Reports** which documents this in detail.



## Want to find out more?

You can find out more about the redevelopment at: [www.rparedevelopment.health.nsw.gov.au](http://www.rparedevelopment.health.nsw.gov.au).

You are also invited to send any feedback, suggestions or comments you would like to raise with the redevelopment team via the contact form on our website or by emailing: [rparedevelopment@health.nsw.gov.au](mailto:rparedevelopment@health.nsw.gov.au).

**Please see our Fact Sheet on Planning**

**Please see our Fact Sheet on Public Exhibition**

**Please see our FAQs on Public Exhibition**

## What services will the development deliver?



Expanded and enhanced Emergency Department and Intensive Care Units



State-of-the-art operating theatres



Expanded and improved adult inpatient accommodation



Increased interventional and imaging services



Expanded neonatology services



Facilities and capabilities for integrated research, education and training



Improved public domain and services including roads, wayfinding, landscaping and information and communications technology infrastructure.

## Key Milestones



## How can I contact the project team?

If you have any questions or would like more information please contact our project team at the details below.

**Email:** [rparedevelopment@health.nsw.gov.au](mailto:rparedevelopment@health.nsw.gov.au) | **Website:** [www.rparedevelopment.health.nsw.gov.au](http://www.rparedevelopment.health.nsw.gov.au)