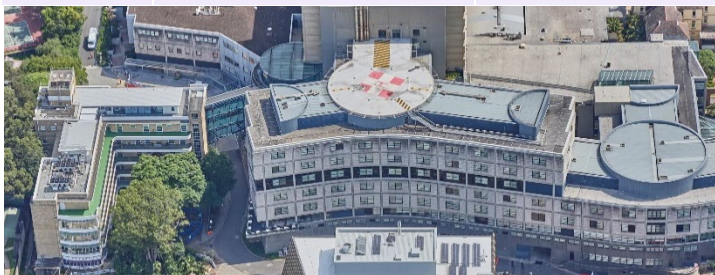


## Construction activities April 2024

The NSW Government's \$940 million investment in the redevelopment of Royal Prince Alfred Hospital will be the biggest transformation of RPA in the hospital's 140-year history of caring for the community.

Upcoming activities			
Date	Works	Location	Impact
Commencing 23 April	Women and babies entrance closure on Johns Hopkins Drive <a href="#">WORKS NOTICE</a>	Johns Hopkins Drive	<ul style="list-style-type: none"> <li>Women and babies entrance on Johns Hopkins Drive closing at 7am on 23 April 2024</li> <li>Construction works commencing on future northern arrival</li> <li>Car park closure and restricted pedestrian and vehicle access</li> </ul>
Commencing 22 April	RPA loading dock impacts <a href="#">WORKS NOTICE</a>	Lambie Dew Drive	<ul style="list-style-type: none"> <li>Loading dock turning circle and access impacted</li> <li>Traffic controllers in place to assist with navigating the space</li> <li>Possible noise, dust and vibration</li> </ul>
Commenced 9 April	Women and babies driveway access changes <a href="#">WORKS NOTICE</a>	Johns Hopkins Drive	<ul style="list-style-type: none"> <li>Women and babies driveway reduce to single-lane</li> <li>Three car spaces removed</li> <li>Traffic controllers in place to assist with navigating the space</li> <li>Possible noise from large construction vehicles</li> </ul>
Commenced 3 April	Lambie Dew Drive full road closure and single-lane closure <a href="#">WORKS NOTICE</a>	Lambie Dew Drive	<ul style="list-style-type: none"> <li>No through road between Johns Hopkins Drive and Lambie Dew Drive</li> <li>Small section of Lambie Dew Drive reduced to single-lane</li> <li>Access to loading dock via Gloucester House Drive only</li> <li>Access to Centenary Institute via Johns Hopkins Drive only</li> </ul>
Commenced 27 March	Grose Street piling works <a href="#">WORKS NOTICE</a>	Grose Street	<ul style="list-style-type: none"> <li>Intermittent noisy works on Grose Street</li> <li>Large construction deliveries</li> <li>Work completed in intervals of noise and respite</li> </ul>
Ongoing	Staff and visitor car park changes <a href="#">WORKS NOTICE</a>	Grose Street	<ul style="list-style-type: none"> <li>Temporary closure of car spaces in the staff and visitor car park</li> </ul>



**Scan here**

To go to our interactive map and see where construction works are occurring on site.

### Minimising construction impacts

The health and safety of staff and the local community is our main priority. We have detailed site safety and environmental procedures in place to minimise the impact of our works and keep construction noise, dust and vibration to a minimum. Due to construction increasing across the campus, patients and visitors are advised to use the Level 5 Missenden Road entrance when possible. Please note the timing of works is subject to change and we will continue to keep you informed as works progress. Thank you for your patience as we build the future of RPA Hospital.

Stay up to date on the redevelopment by [subscribing](#) to our project updates. Visit the project website [rparedevelopment.health.nsw.gov.au](http://rparedevelopment.health.nsw.gov.au) for more information. Email [RPARedevelopment@health.nsw.gov.au](mailto:RPARedevelopment@health.nsw.gov.au) or phone (02) 9978 5901 with any questions.

**The RPA Redevelopment Team**

### How can I contact the Project Team?

If you have any questions or would like more information please contact our project team at the details below.

**Email:** [RPARedevelopment@health.nsw.gov.au](mailto:RPARedevelopment@health.nsw.gov.au)

**Website:** [www.rparedevelopment.health.nsw.gov.au](http://www.rparedevelopment.health.nsw.gov.au)