

Project update RPA Hospital Redevelopment

December 2024 – Year in Review



Shaping tomorrow's healthcare today

As 2024 comes to a close, we reflect on the remarkable progress that has been made on the RPA Hospital Redevelopment, given significant challenges. This year marked a major milestone, with main works commencing on site.



The new hospital will boast a comprehensive range of services and specialties and has been designed to optimise efficiency and accessibility. This will ensure seamless transitions and holistic care for all who access services at RPA Hospital.

Throughout the year, extensive consultation has been undertaken with staff, patients, and the community to ensure the final outcomes being delivered meet the evolving needs of the growing community. Community engagement has been a cornerstone of this project. Regular updates, briefings, and stakeholder meetings were held to keep the community informed and involved.

Throughout the year, the welfare of workers, hospital staff, and community remained a top priority.

A robust health and safety plan was implemented, ensuring strict protocols were followed on site to minimise impacts of construction.

As we move into the next phase of the redevelopment, 2025 will deliver more exciting challenges and milestones. With the main works well under way, we expect to see the structure of the new buildings take form, as well as continued progress on the internal fit-out for the vertical expansion of the main hospital building.

This project would not have been possible without the dedication and collaboration of our hospital staff, the project team, the contractors, and our partners. We are also grateful to the local community for their ongoing support and patience as we work to create a facility that will continue to serve the healthcare needs of future generations.

Kiel Harvey,
General Manager, Royal Prince Alfred Hospital

Our achievements



Contractor site establishment



Tissue Pathology and Diagnostic Oncology Official Opening



Northern arrival closure with relocation of Women and Babies reception and NETS/ NEFT drop-off zone



New northern arrival works commence



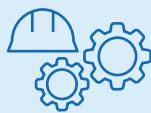
Arts animation release



'Hard works knows no gender' campaign



Lambie Dew Drive early works commence



Building 89 internal works commence



Temporary helicopter landing site construction completed



Significant progress made on Aboriginal worker and contractor participation targets



East campus infrastructure and new tower works commence

Culture, community and creativity

Integration of the arts is planned as part of the \$940 million Royal Prince Alfred (RPA) Hospital Redevelopment to support the health and wellbeing of patients, visitors and staff.

Applying creative, participatory, or receptive arts across all artforms will help to provide a welcoming space and enhance health and wellbeing from prevention through to treatment.

Culture, community and creativity are at the heart of the RPA Redevelopment Arts Strategy. The strategy will build on the work that has been done over many years at RPA to integrate the arts into healthcare and throughout the redevelopment. The strategy identifies opportunities to reshape the experience of compassion and care environments through creative practice.

Developed in consultation with the Sydney Local Health District Aboriginal Health Unit, the Arts Strategy embeds protocols and practices to promote cultural safety for Aboriginal patients and families, while creating a welcoming and healing environment for Aboriginal and non-Aboriginal communities.

The strategy seeks to deliver world-class arts/health experiences through the development of multi-dimensional narratives centring on Gadigal Land.

To achieve this, a diverse selection of artists will be involved on projects ranging from major public artworks and heritage interpretation in external areas of the campus, through to intimate soundscapes in key clinical ward areas to support respite.



Weaving project by artist Hiromi Tango



Hard work knows no gender

In an industry traditionally dominated by men, women are increasingly making their mark and breaking down barriers in construction. From architects to engineers, their contributions are reshaping the industry towards a more gender-balanced future.

Allie Korompay is a young Undergraduate Engineer with CPB Contractors working on the RPA Hospital Redevelopment project. CPB Contractors is delivering the main works for the redevelopment and is a proud supporter of women in construction.

Currently studying a Bachelor of Civil Engineering, Allie has always been driven to understand the mechanics behind how and why things work. Despite being nudged towards female-dominated professions, she pursued her passion and is a key member of the construction team.

Allie's impact extends far beyond her technical expertise. In the male-dominated industry, she is an inspiration for aspiring female engineers. Showing leadership and determination, she is also debunking stereotypes and paving the way for greater gender diversity in construction.

As the infrastructure industry continues to evolve, it's crucial that we recognise and celebrate the contributions of women in construction. The RPA Hospital Redevelopment team will continue to support and seek opportunities for people to pursue their passions, regardless of gender, and we look forward to showcasing more of our talented team as the project progresses.

Get to know more about Allie's passions in our [meet the team profile](#).



Aboriginal participation

Third-year electrical apprentice and Biripi man Brendan Syron is challenging stereotypes and making a significant impact at the Royal Prince Alfred (RPA) Hospital Redevelopment project.

A former hotel manager, Brendan chose to chase his passion of tinkering with electronics and study an electrical trade during the COVID-19 pandemic. Motivated by proving that with the right skills and dedication, everyone can excel, Brendan is passionate about being a role model and advocate of change.

The redevelopment project has seen a significant number of Aboriginal tradespeople engaged in various capacities. This inclusion is part of a wider strategy to address the under-representation of Aboriginal people in the construction and engineering sectors.

The RPA Hospital Redevelopment is part of the NSW Government's Infrastructure Skills Legacy Program (ISLP) which aims to develop skills, capability and capacity in the construction industry and increase diversity on sites, including the representation of Aboriginal people.

In addition to providing opportunities for business and employment, main works contractors CPB Contractors has also supported initiatives aimed at preserving and celebrating Aboriginal culture. These include networking events, ceremonies on site and honouring and incorporating Aboriginal heritage through consultation in design.

Find out more about Aboriginal participation in the [latest news](#) on the [project website](#).

Test flight success

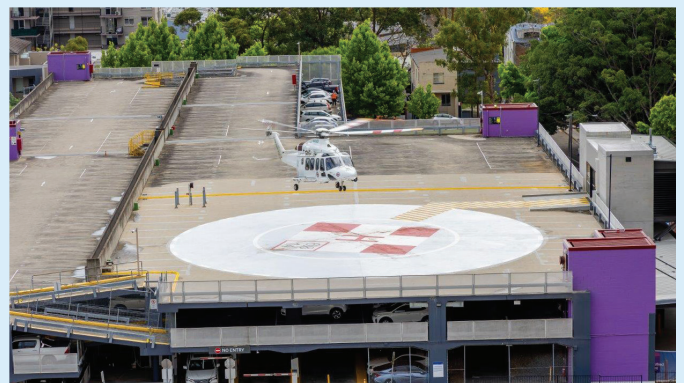
The RPA Hospital Redevelopment team recently celebrated the successful test flights to the temporary helicopter landing site (HLS) located on the rooftop of the RPA Hospital Staff and Visitor Car Park.

A day flight was completed in the afternoon of Tuesday 19 November and night flights took place on Thursday 21 November 2024. The existing HLS will be out of use to allow for the arrival of tower cranes to support construction of the new 15-storey tower on the east campus.

The temporary HLS will be in use for approximately two years before the permanent helipad is opened on the 15-storey tower once it is completed. When the temporary helipad is no longer required, the lifts will be made available for public use to enhance accessibility in the car park.

The temporary HLS is now active and will enable RPA Hospital to continue to provide critical care to the community while the tower cranes are in use on the east campus.

You can find out more in the [Temporary Helicopter Landing Site Fact Sheet](#) and [FAQs](#).



Collaborating with CCAN

The project team periodically attends the Consumer Advisory Network (CCAN) meeting to connect with the dedicated and enthusiastic community advocates supporting RPA Hospital. Collaborating with the CCAN demonstrates a commitment to gaining consumer and community insights.

Catherine Taylor has been a volunteer for more than 17 years at the Royal Prince Alfred Hospital and is a dedicated CCAN member. She has helped shape the RPA Hospital Redevelopment since the early planning stage.

Born at RPA in 1951, Catherine went on to study social work at the University of Sydney, and in 1975 at the age of 22 she returned to the hospital to complete her first placement.

Passionate about connecting with people and being a voice for the people, Catherine sits on 10 different committees and brings her strong clinical knowledge and connection to community to help inform and shape the future of Royal Prince Alfred Hospital.



Introducing **Catherine Taylor**

Consumer and Community
Advisory Network member
and volunteer at RPA Hospital

What is CCAN?

The RPA Hospital Consumer and Community Advisory Network is a network of consumer representatives that reflects the diversity of the local and broader community that RPA Hospital serves. Members of the network include people who use, have used or have an interest in the services the hospital provides.

How did you become part of the CCAN?

I was a social worker throughout my professional life, with a focus on hospital care. I've always had a passion for supporting my community and after relocating from the Central Coast to Sydney, I started volunteering at RPA in 2007. I was asked to be part of the Consumer and Community Advisory Network in 2008.

Why did you want to be part of the CCAN?

I've always had a passion for supporting my community and wanted to represent the local and broader community to help enhance health outcomes and the services provided. It's an honour to direct, inform and engage with people.

Tell us a unique fact about RPA Hospital?

Did you know there's a museum for RPA Hospital? It's so lovely to have a place to hold the history of this amazing institution.

What do you love about RPA?

This hospital was voted best in the country and it's clear to see why. We are so blessed with the staff and community that make this place. It's not the buildings, it's the results of the brain power and care that people receive that make RPA what it is today.

How have you helped shape the redevelopment?

The CCAN has regular meetings and updates from the RPA Redevelopment team to engage us and seek feedback on a range of outcomes. I have helped shape the redevelopment by utilising my professional experience, but also speaking for my community. I bring the voice of the people to key meetings and help bridge the gap between project and people.

What are you most looking forward to with the redevelopment?

I am really looking forward to the streamlining of the hospital. Through wayfinding, enhancements to accessibility, better mobility, we can create a better flowing campus. The redevelopment will help us cover and embrace modern health requirements to enhance health outcomes and it will allow RPA to evolve into the best place it can be.

Through wayfinding, enhancements to accessibility, better mobility, we can create a better flowing campus.

What are three words your family and friends would use to describe you?

Tenacious, caring, empathetic. I always want to help people, and I see others' reality before I see my own.

What's your favourite song?

Carly Simon – All The Things You Are.

Last great TV show or movie you watched?

Oh, that's a hard one! I really love West Wing and have watched it multiple times, however, recently I've been watching Ted Lasso and love it for its humanity. And how can I forget, afternoons are never complete without some Antiques Roadshow.

If you're cooking for dinner, what will everyone be eating?

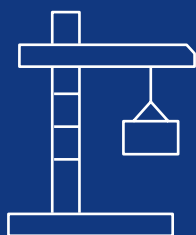
Lamb cutlets with potato au gratin, followed by an apple crumble – with cream, of course.

Meet the team

We're excited to introduce you to the talented individuals driving the transformation of our hospital. The 'Meet the Team' profiles on our redevelopment website offer a closer look at the dedicated professionals leading the charge in shaping the RPA Hospital Redevelopment.

From architects and engineers to healthcare planners and project managers, these profiles showcase the expertise and passion that go into shaping the future healthcare environment for our community.

Explore the [team profiles](#) now on the project website to learn more about the people making a difference.



Name the cranes 2025

Two tower cranes will be erected at RPA in the new year to assist in the construction of the new 15-storey tower. Sky high for the duration of the redevelopment, the cranes will need naming, and we will be calling on the Camperdown community to help decide what these should be. Make sure you subscribe to our project updates and stay tuned for more information on how to enter the competition.



Holiday closure period

The RPA Hospital Redevelopment team will be taking a break over the holiday period from Saturday 21 December 2024 returning Monday 6 January 2025. During this time, construction activity will pause to ensure that all staff and contractors can enjoy the festive season with their families.

We wish everyone a wonderful holiday period and look forward to resuming work on the project after the holiday period.

Want to find out more?

You can find out more about the redevelopment at: rpadevelopment.health.nsw.gov.au

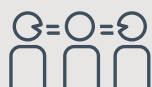
[Temporary HLS fact sheet](#)

[East campus access changes](#)

[Tower crane installation](#)

[Works notices](#)

You are also invited to send any feedback, suggestions or comments to the redevelopment team via email at HI-RPARedevelopment@health.nsw.gov.au or phone (02) 9978 5901.



For an interpreter, call 131 450 and ask them to call 02 9978 5402

For more information

T: 02 9978 5901

E: HI-RPARedevelopment@health.nsw.gov.au

W: rpadevelopment.health.nsw.gov.au